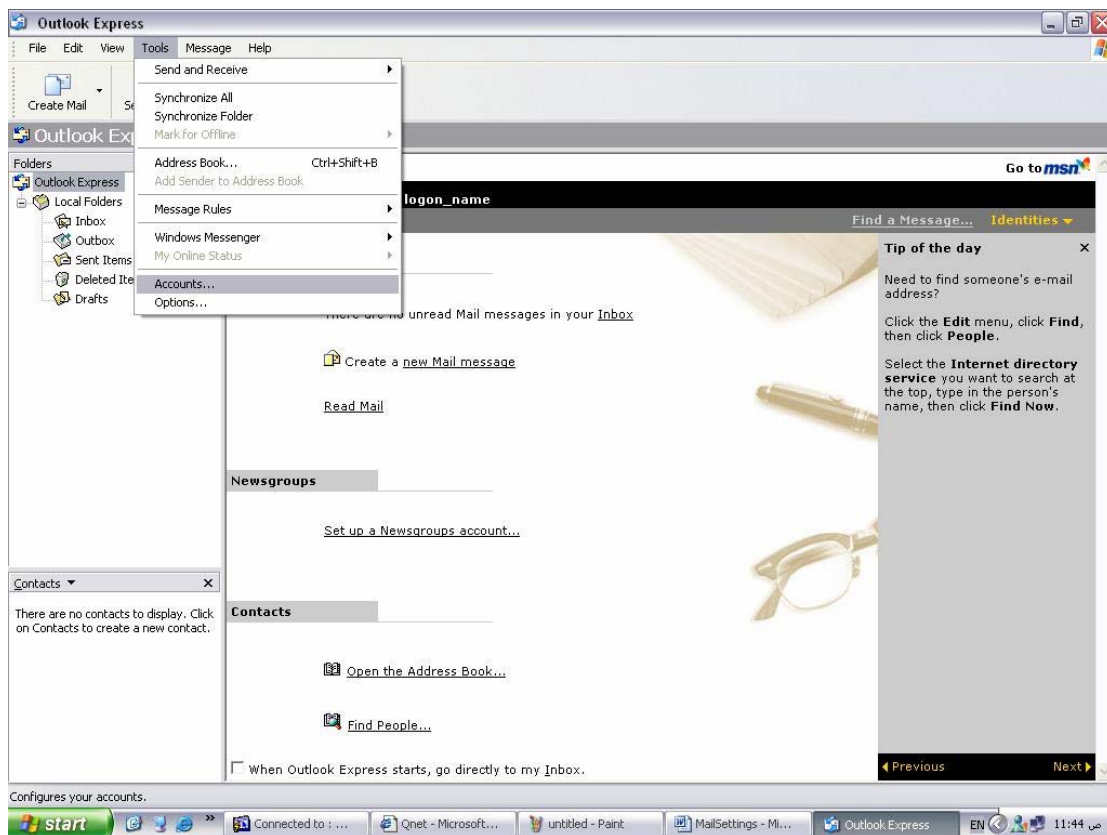


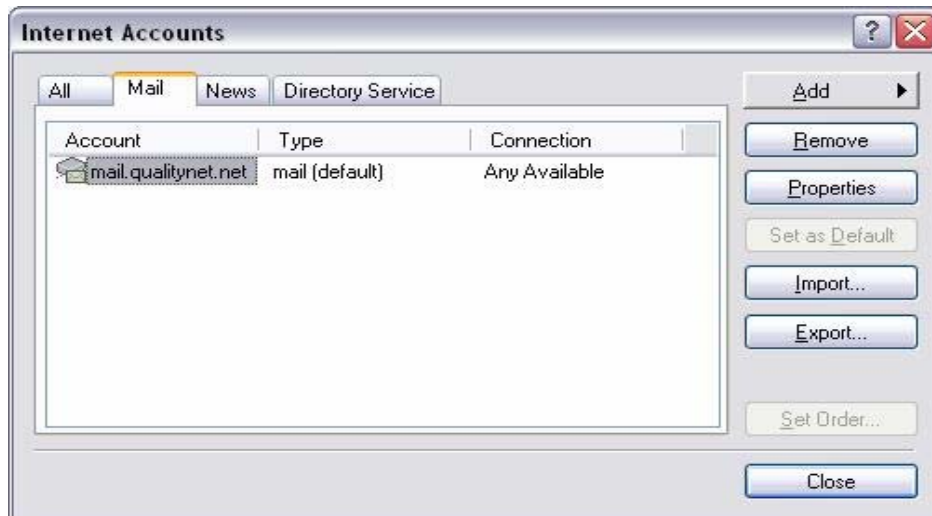
- [Settings for Outlook Express](#)
- [Settings for Microsoft Outlook 2003](#)
- [Settings for Eudora](#)

Settings for Outlook Express:

1) Open Outlook Express, go to [Tools](#) then click on [Accounts](#).

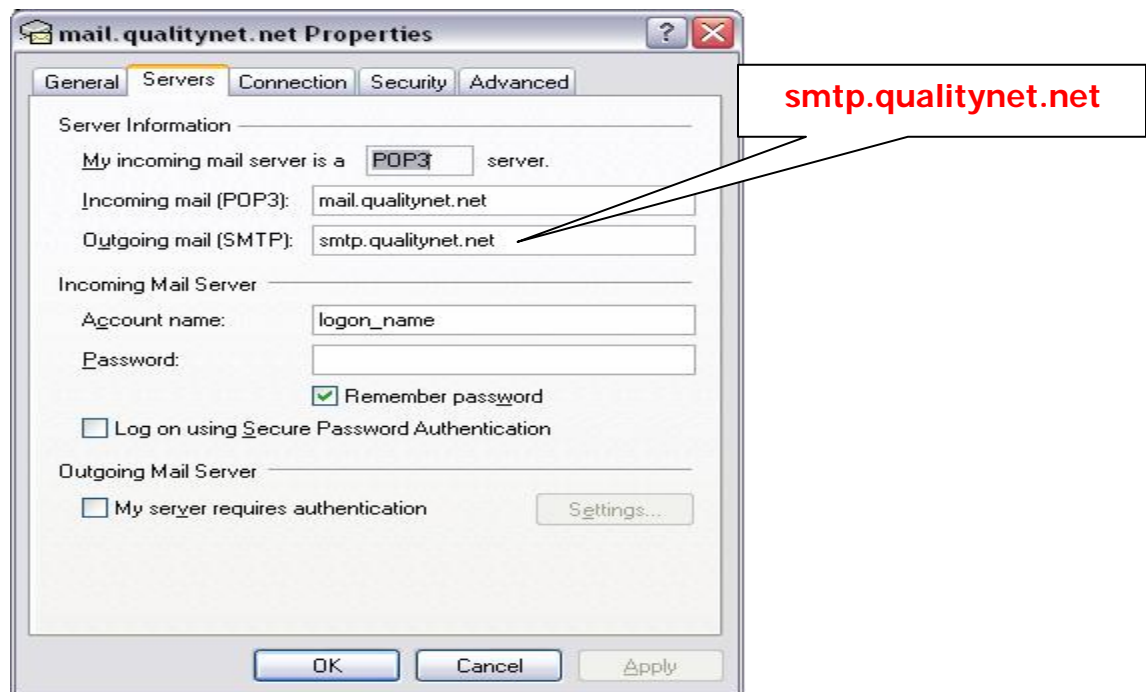


2) From [Internet Accounts](#) Dialog Box choose the [Mail](#) tab.



3) Select "mail.qualitynet.net" and click over [Properties](#) button to get a dialog box opened

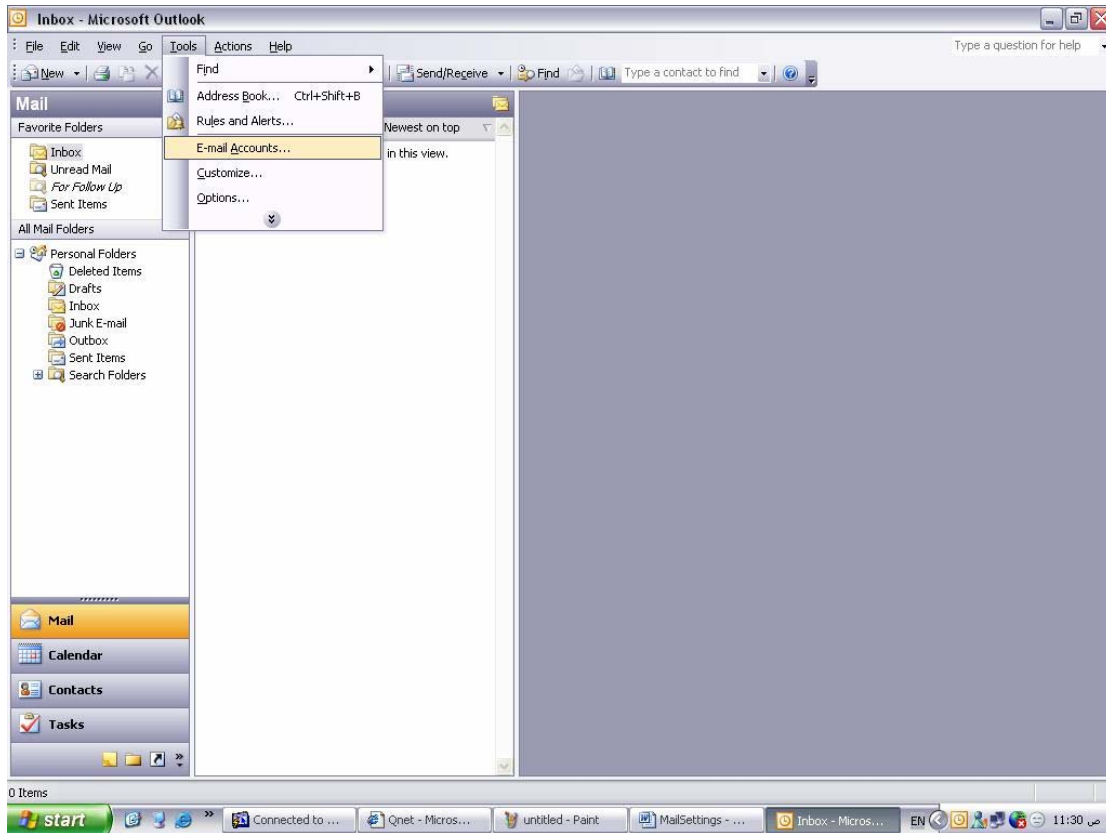
4) Choose "[Servers](#)" tab and change the Outgoing Mail (SMTP) to "smtp.qualitynet.net"



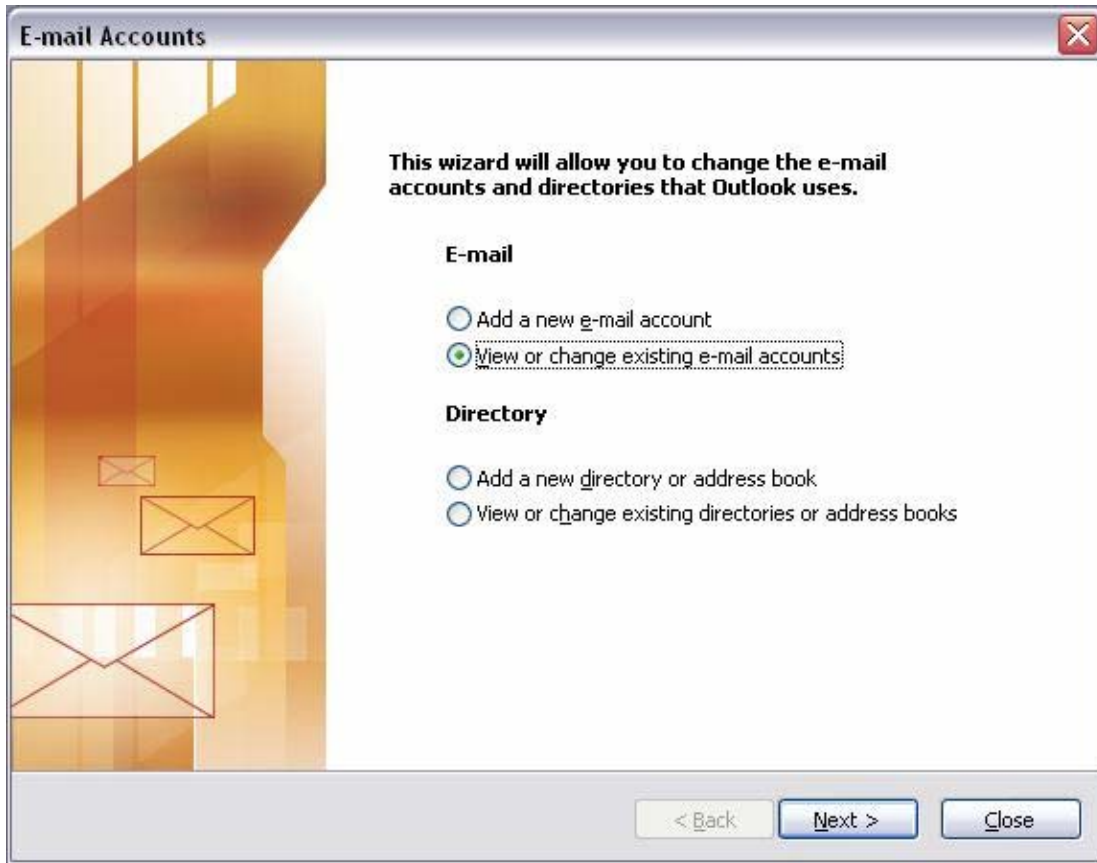
5) Click on [OK](#) and then [Close](#)

Settings for Microsoft Outlook 2003:

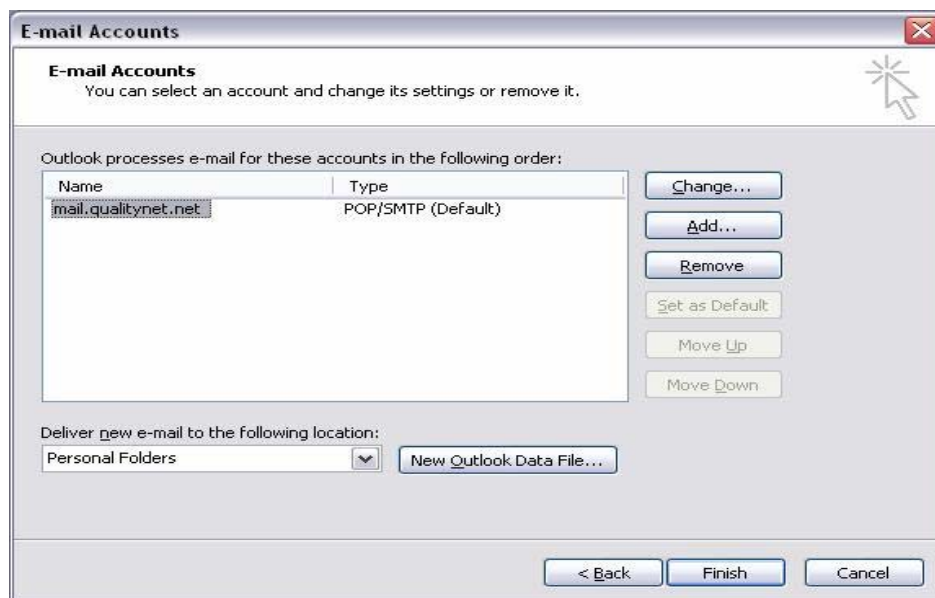
1) Open Microsoft Outlook, go to **Tools** then click on **E-mail Accounts**



2) Choose [View or change existing e-mail accounts](#) & click on [Next](#)



3) In E-mail Accounts dialog box highlight your mail account & click on [Change](#)





Qualitynet Outgoing Mail (SMTP) Modification

4) Now point to Outgoing Mail Server (SMTP) & change it to "smtp.qualitynet.net"

E-mail Accounts

Internet E-mail Settings (POP3)
Each of these settings are required to get your e-mail account working.

User Information	Server Information
Your Name: logon_name	Incoming mail server (POP3): mail.qualitynet.net
E-mail Address: logon_name@qualitynet.net	Outgoing mail server (SMTP): smtp.qualitynet.net

Logon Information

User Name: logon_name
Password:
 Remember password

Log on using Secure Password Authentication (SPA)

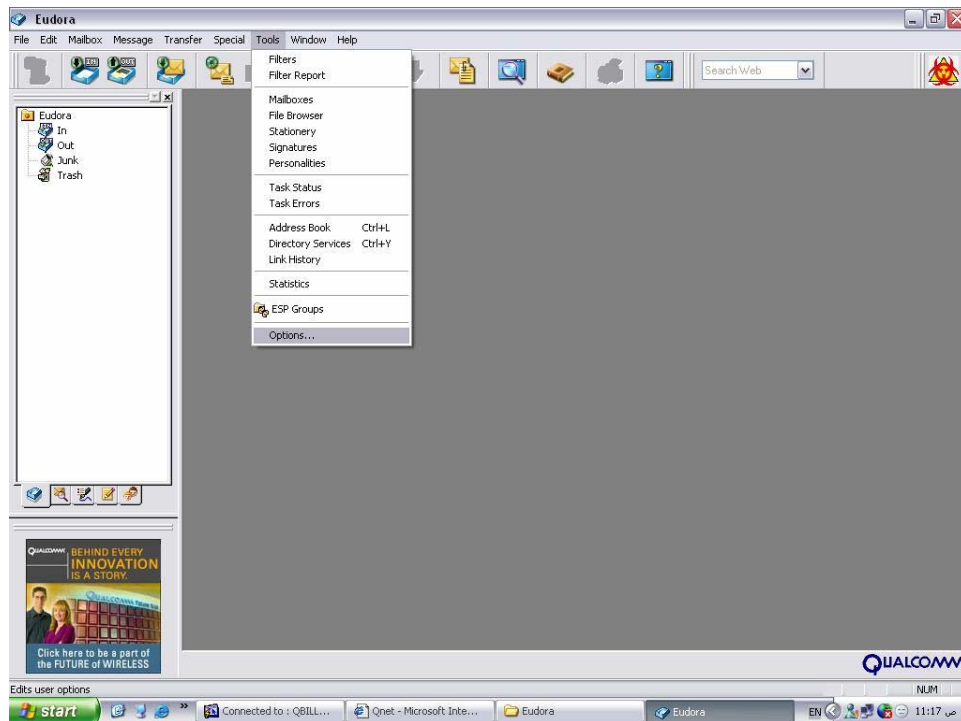
Test Settings
After filling out the information on this screen, we recommend you test your account by clicking the button below. (Requires network connection)

< Back Next > Cancel

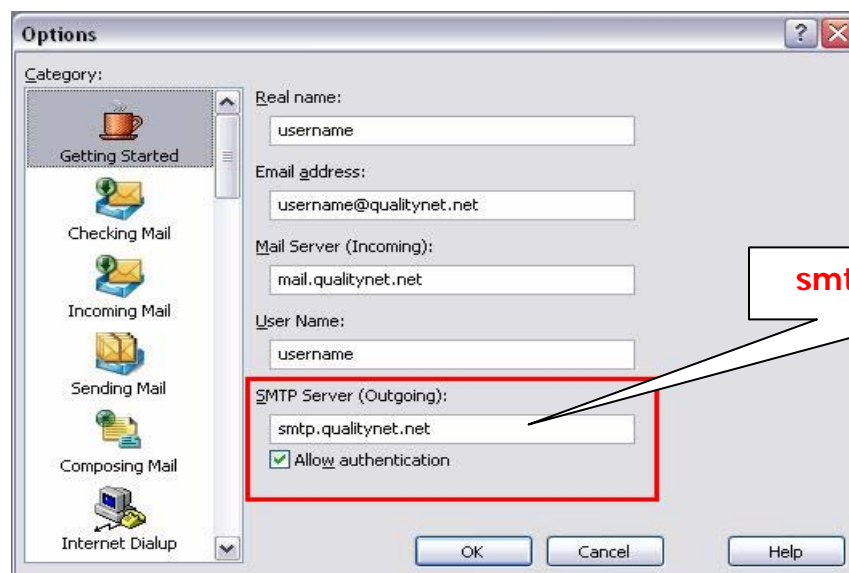
5) Click on Next then Finish

Settings for Eudora:

1) Go to **Tools** then click on **Options**



2) From the left pane of the dialogue box "**Category**", select "**Getting Started**" and then change the SMTP Server (outgoing) to "smtp.qualitynet.net"



3) Click on **OK** to finalize the settings